

STRADA-2X2-ME-WIDE optics – For wider roads and taller poles

LEDiL introduces two new STRADA-2X2 street lighting optics -ME-WIDE1 and -ME-WIDE2 designed for European and Asian roads requiring good luminance performance. ME-WIDE optics are especially designed for wider roads and taller poles than regular ME optics. STRADA-2X2-ME-WIDE1 version is for one sided roads whereas -WIDE2 is for two sided roads, either by opposing each other or for staggered pole setups. Asymmetric design removes the need of tilting the luminaire head. STRADA-2X2-WIDE1 light distribution design allows also illumination of the pedestrian walkways under the pole.

FEATURES and BENEFITS

- Design based on STRADA-2X2-ME, designed especially for wider roads and higher poles
- STRADA-2X2-ME-WIDE1 light distribution design allows also illumination of pedestrian walkways under the pole
- STRADA-2X2-ME-WIDE2 designed especially for staggered pole setups
- Asymmetric design removes the need of tilting the luminaire head

MARKETS and TYPICAL APPLICATIONS

- Street lighting



C14164_STRADA-2X2-ME-WIDE1

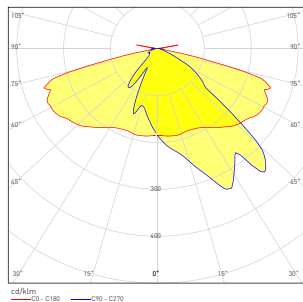


C14165_STRADA-2X2-ME-WIDE2

TECHNICAL SPECIFICATIONS

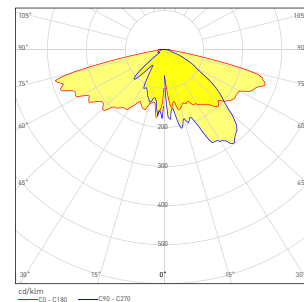
STRADA-2X2-ME-WIDE1

- Dimensions: 50 x 50 mm
- Height: 8.3 mm
- Typical efficiency 83% (with a cover glass)
- Precision-molded from optical grade PMMA – UL94 HB rated material with operating rating -40°C to +80°C



STRADA-2X2-ME-WIDE2

- Dimensions: 50 x 50 mm
- Height: 7 mm
- Typical efficiency 80% (with a cover glass)
- Precision-molded from optical grade PMMA – UL94 HB rated material with operating rating -40°C to +80°C

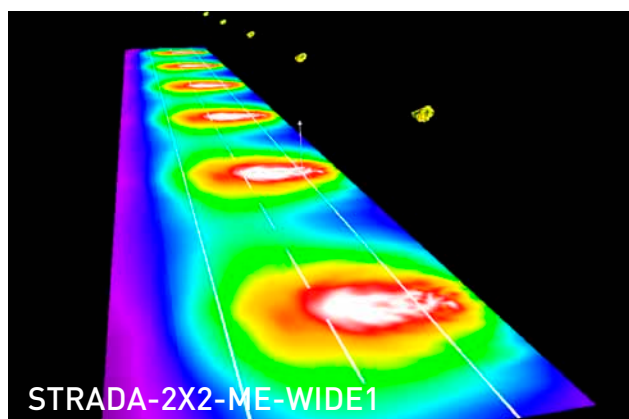


APPLICATION EXAMPLE

STRADA-2X2-ME-WIDE1

Luminous flux (Luminaire): 19 787 lm
 Arrangement: Single row, bottom
 Pole distance: 36 m
 Mounting height: 10 m
 Road width: 10 m
 Side walk width: 2 m

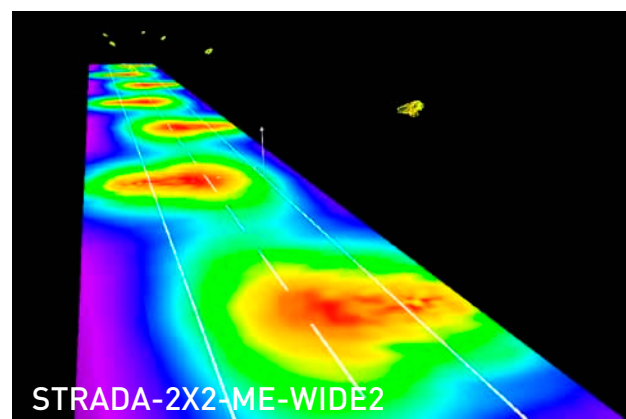
Maximum luminous intensities
 at 70°: 557 cd/klm
 at 80°: 99 cd/klm



STRADA-2X2-ME-WIDE2

Luminous flux (Luminaire): 19 648 lm
 Arrangement: Staggered
 Pole distance on one side: 72 m
 Mounting height: 10 m
 Road width: 10 m
 Side walk width: 2 m

Maximum luminous intensities
 at 70°: 551 cd/klm
 at 80°: 69 cd/klm



ORDERING INFORMATION

C14164_STRADA-2X2-ME-WIDE1

C14165_STRADA-2X2-ME-WIDE2

Consult www.ledil.com for ordering codes and latest product specifications, which may vary by LED