

## STRADA-2X2-SCL – Your off-the-shelf solution to tackle European S-class requirements

LEDiL introduces a new optic solution to the growing STRADA-2X2 family. STRADA-2X2-SCL is designed to give a very wide beam with the highest intensity peak reaching as far as 75 degrees. The lens is designed to maintain its wide beam even with the flat cover glass attached. STRADA-2X2-SCL can illuminate the roads with distance from pole to pole being up to 10 times the mounting height. With special attention given to minimize light spillage to the house side and modular design compatible with all other STRADA-2X2 optics STRADA-2X2-SCL is the perfect companion to meet the requirements of the European S-class.

### FEATURES

- Very wide beam pattern falling between IESNA Type II and Type III distributions
- Designed for European S-class
- Special attention has been given to minimize light spilling to the house side
- Compatible with LEDs up to 5050 sized packages\*

### TYPICAL APPLICATIONS

- Street and parking lot lighting
- Pedestrian lighting
- General road lighting
- Outdoor lighting

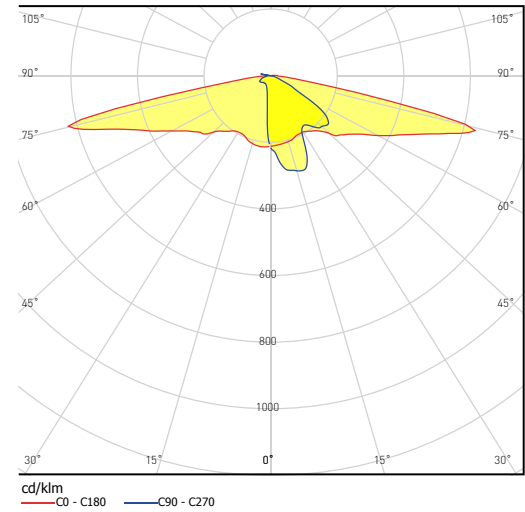
\* Go to [www.ledil.com/product\\_search](http://www.ledil.com/product_search) for complete listing of all qualified LEDs. Please send qualification request on email in case you think we are missing a specific LED.



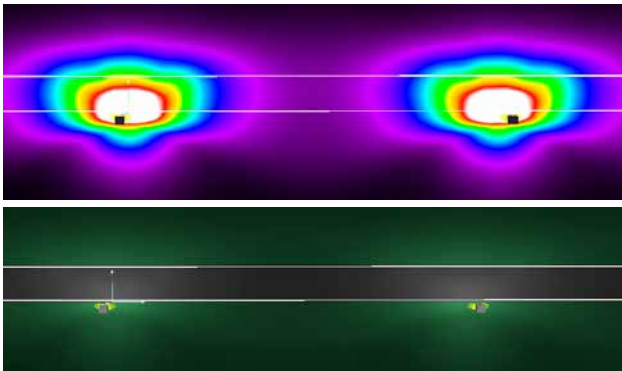
C15021\_STRADA-2X2-SCL

## TECHNICAL SPECIFICATIONS

- Dimensions: 50 x 50 mm
- Height: 7,71 mm
- Typical efficiency: 95%
- Precision-molded from optical grade PMMA – UL94 HB rated material with operating rating -40°C to +80°C



## DESIGN EXAMPLE

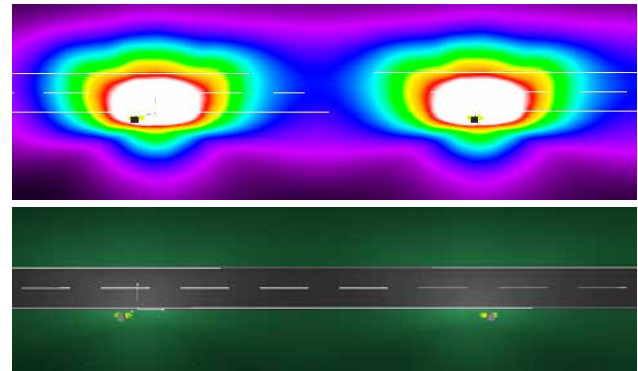


### Residential road S4 class (EN 1320-1)

Luminaire output with flat glass cover	4 000 lm
Pole height	6 m
Pole spacing	48 m
Road width	5 m
Overhang	-0,5 m
Boom angle	0 deg

u0: 0.190

$E_{av}$ (lx)	$E_{min}$ (lx)
5.88	1.10
≥5.00	≥1.00
✓	✓



### Two-lane roadway ME4a class (EN 1320-1)

Luminaire output with flat glass cover	12 000 lm
Pole height	10 m
Pole spacing	55 m
Road width	7 m (two lanes, R2 coating)
Overhang	-0,5 m
Boom angle	0 deg

Eav: 9.91 lx, u0: 0.350

$L_{av}$ (cd/m <sup>2</sup> )	U0	UI	TI (%)	SR
0.75	0.50	0.61	15	0.70
≥0.75	≥0.40	≥0.60	≤15	≥0.50
✓	✓	✓	✓	✓

## ORDERING INFORMATION

C15021\_STRADA-2X2-SCL

Visit [www.ledil.com](http://www.ledil.com) for ordering codes and latest product specifications, which may vary by LED