



STRADA-2X2-VSM – Proven solution for your area lighting needs

STRADA-2X2-VSM is a complementary module to the STRADA-2X2 product family. Its wide square-shaped beam is ideal for many area lighting applications. The standardized STRADA-2X2 modular structure makes the luminaire manufacturing easier and more cost efficient. The STRADA-2X2-VSM is optimized for good luminance uniformity and cut-off without sacrificing efficiency. It works with the range of high-power LEDs up to the 5050 size packages.

FEATURES

- Symmetrical wide square beam (IESNA Type V Short)
- Good luminance uniformity
- High efficiency optical design
- Typical luminaire classifying IESNA "Semi Cutoff" or G1-G2 luminous intensity class (EN13201)

TYPICAL APPLICATIONS

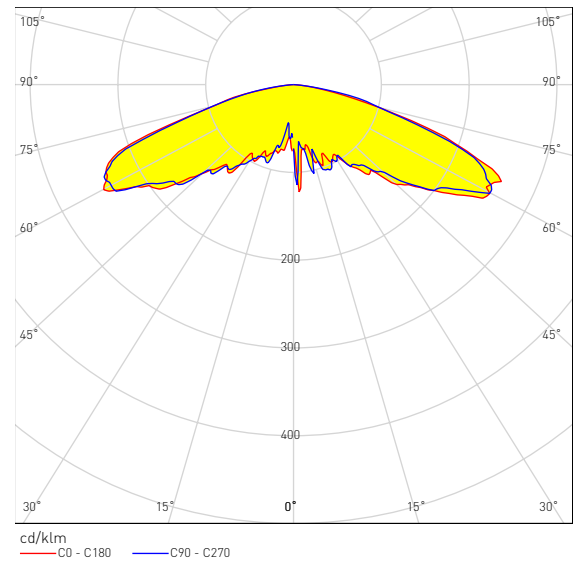
- Wide area lighting
- Pedestrian areas
- Parking lots
- Street lighting



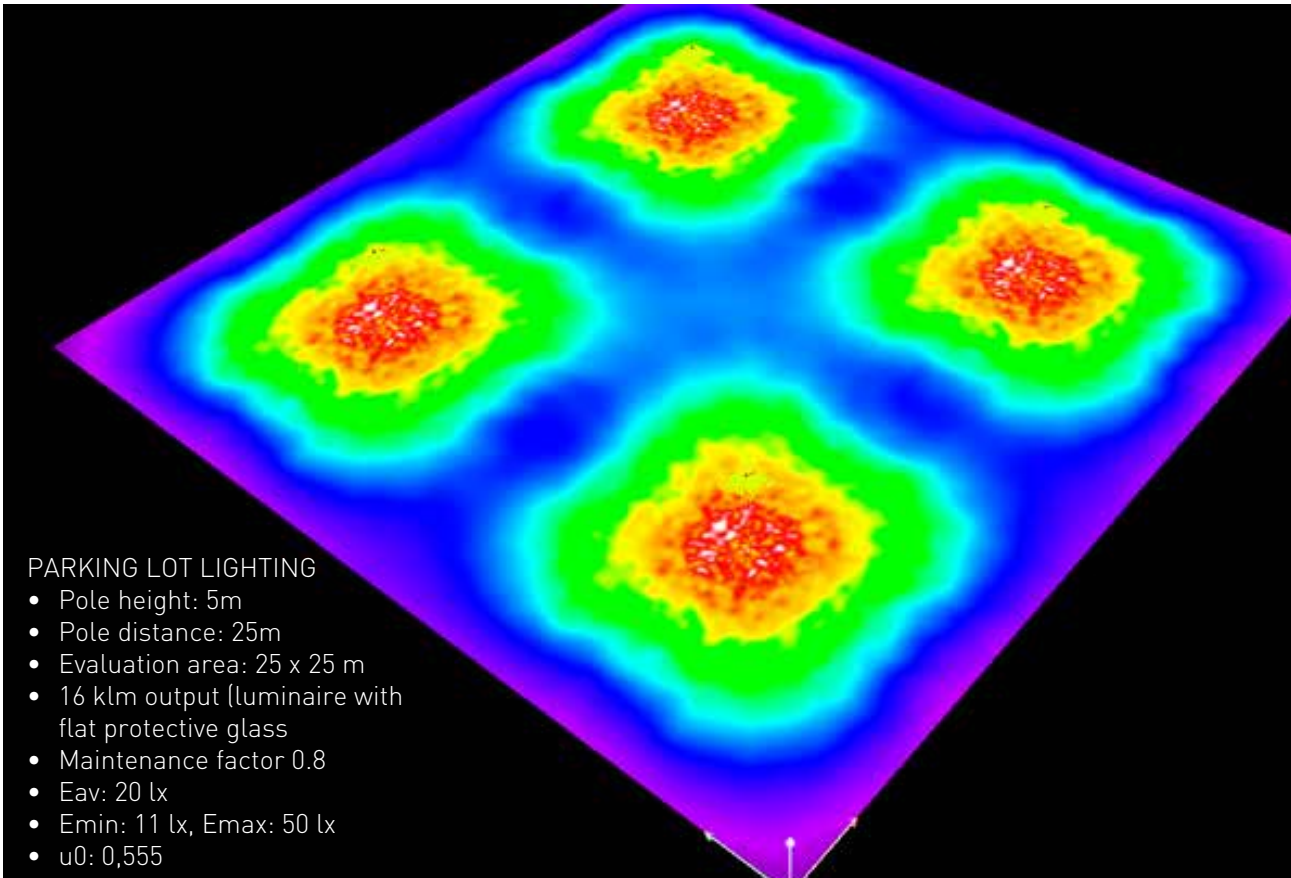
C14680_STRADA-2X2-VSM

TECHNICAL SPECIFICATIONS

- Dimensions 50 x 50 mm
- Height 6.14 mm
- Typical efficiency 94%
- Precision-molded from optical grade PMMA – UL94 HB rated material with operating rating -40°C to +80°C



DESIGN EXAMPLE



ORDERING INFORMATION

C14680_STRADA-2X2-VSM

Visit www.ledil.com for ordering codes and latest product specifications, which may vary by LED