



## STRADA SQ-VSM Outdoor Lighting

### LEDiL Introduces STRADA-SQ-VSM for Outdoor Lighting Applications including IESNA Type V Square

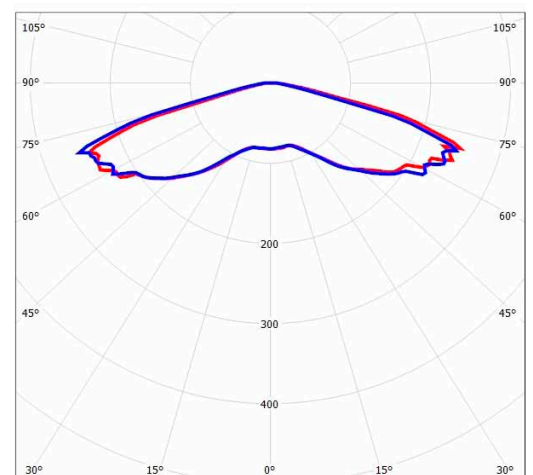
LEDiL Oy, a global leader in the development of secondary LED optics, introduces a new member of the STRADA family of street and area lighting optics – STRADA-SQ-VSM. This new product is designed and qualified for use with Philips Lumileds LUXEON® M, as well as Cree XLamp® XT-E and XM-L LEDs. It produces a square, uniform and extremely wide beam (150° FWHM) with good light cut-off to minimize glare. The product is ideal for development of parking lot luminaires, recreational and park lighting up to 1:7 mounting height to width ratio.

#### FEATURES and BENEFITS

- Sleek, low-profile design supports both retrofit and new designs
- Flexible installation side-by-side or end-to-end
- Screw holes allow secure fastening
- Low glare; additional glare shields or baffles may not be necessary
- Shape resists excessive build-up of dust and dirt
- High light transmission efficiency (→90%)
- Virtually impervious to long-term UV damage
- High scratch and abrasion resistance
- IP-rated sealing system may be created by using potting or sealing compounds
- RoHS compliant and halogen-free.

#### MARKETS and TYPICAL APPLICATIONS

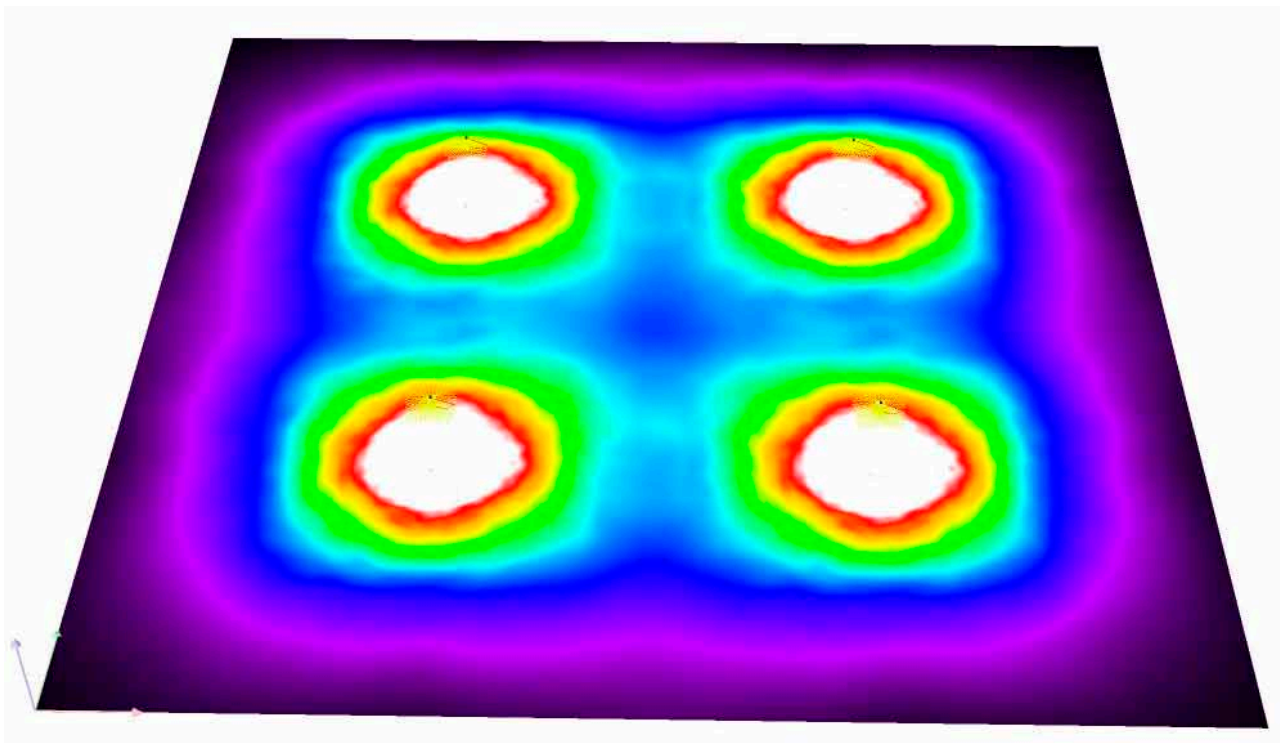
- IESNA Type V Square configurations
- Park and recreational facility lighting
- Cable wire mounted boulevards installations
- Wide-area roadway lighting applications



## TECHNICAL SPECIFICATIONS

- Dimensions: 25 x 25 x 6.8mm (with tape 6.95mm)
- Mounts with screws, adhesive tape, or secondary adhesives
- 150° FWHM (Full Width Half Maximum)
- Precision-molded from optical grade PMMA – UL94 HB rated material with operating rating -40°C to +80°C

## SIMULATED APPLICATION



Pole Height: 5m

Distance between Poles: 25m

Pole Height / Distance Ratio: 1:5

## ORDERING INFORMATION

Ordering codes: C12727\_STRADA-SQ-VSM (without tape)

CA12891\_STRADA-SQ-VSM (pre-installed mounting tape)

Find your local contact at [http://www.ledil.fi/where\\_to\\_buy](http://www.ledil.fi/where_to_buy)

Disclaimer! The statements presented above represent a theoretical optimal situation and only serve as a possible solution suggestion. Each lighting project must be separately optimized case by case. Consult [www.ledil.com](http://www.ledil.com) for ordering codes and latest product specifications, which may vary by LED.