

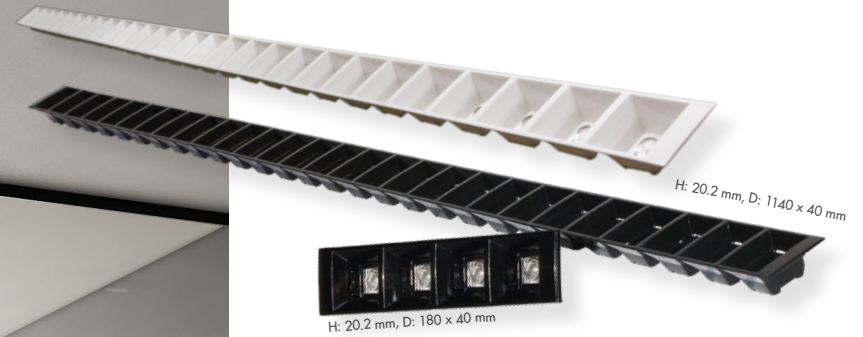
# LEDiL®

## LIGHT THAT IS RIGHT

LATEST FROM  
**LEDiL®**

A • ARCHITECTURAL • OFFICE • LILIAN • DAISY • CLAUDIA • IRA • VICTORIA • LINNEA • LINEAR • OFFICE • DAISY • 5050 • CLAUDIA • LEIA • UGR • INDOOR • LILIAN • CARMEN • ILONA • STRADA • JENNY • OFFICE • LILIAN • 5050 • DAISY • ILONA • ARCHITECTURAL • OFFICE • LILIAN • DAISY • CLAUDIA • OFFICE • CSP • STRADA • D • STRADA • 5050 • ARCHITECTURAL • LEIA • UGR • INDOOR • LILIAN • LINNEA-GC • LINEAR • OFFICE • STRADA • VICTORIA • ARCHITECTURAL • UGR • GABRIELLA • V • CARMEN • OFFICE • ILONA • STRADA • 5050 • DAISY • OFFICE • ARCHITECTURAL • LEIA • ARCHITECTURAL • CLAUDIA • LILIAN • DAISY • UGR • DAHLIA • ILONA • LI • STRADA • ARCHITECTURAL • LEIA • UGR • INDOOR • LILIAN • STRADA • DAISY • CSP

# DARE NOT TO GLARE.



## DAISY

### GLARE FREE GENERAL LIGHTING FOR OFFICES

Discreet direct light for recessed, surface  
mounted and suspended office luminaires

UGR <19

High efficiency >85 % (even with the shade)

Available in piano black and white

Compatibility – Optimized for 2835 and compatible  
with up to 5630 size mid-power LED packages

Recommended to be used with two LEDs  
per one optic (up to 5630 in size)

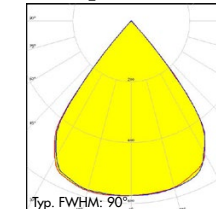
Compatible with up to 4ft long PCB

■ OFFICE LIGHTING

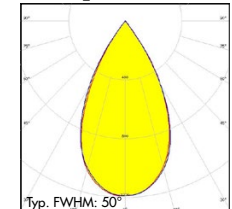
■ PUBLIC SPACE LIGHTING

■ TUNABLE WHITE

CN16604\_DAISSY-4X1-VVV  
CN16586\_DAISSY-28X1-VVV  
CN16785\_DAISSY-4X1-VVV-VVHT  
CN16786\_DAISSY-28X1-VVV-VVHT



CN16606\_DAISSY-4X1-VV  
CN16605\_DAISSY-28X1-VV  
CN16788\_DAISSY-4X1-VV-VVHT  
CN16787\_DAISSY-28X1-VV-VVHT





# HEKLA SOCKETS AND SOLDERLESS CONNECTORS



## One Connector, Many Optics

Make your connections more versatile, robust and future proof with LEDiL's Ø44 mm HEKLA sockets and solderless connectors

## COMPATIBLE

Support for many COBs and LEDiL optics

## USABLE

Easy to use twist & lock mechanism

## DURABLE

Durable materials that can withstand high temperatures without losing grip

## INNOVATIVE

Same system – freedom to choose between solderless connector or mechanical socket



Certified according to following standards: EN 60838-1 :2004 + A 1 :2008 + A2:2011

**BARBARA-G2**  
Ø 70 mm



**MIRELLA-G2**  
Ø 50 mm



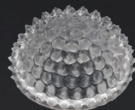
**BROOKE-G2**  
Ø 45 mm



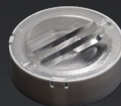
**CARMEN**  
Ø 90 mm  
Ø 70 mm (with CARMEN-HLD-C)  
Ø 50 mm



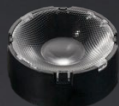
**ZORYA**  
Ø 55 mm  
with ZORYA-  
ADAPTER-HEKLA



**RONDA**  
Ø 54 mm  
with RONDA-HLD-C



**WINNIE**  
Ø 50 mm  
with WINNIE-HLD-C



**ILONA**  
Ø 50 mm



# ILONA

## BEST TIR LENS FAMILY FOR RETAIL LIGHTING

Narrow beam with high efficiency (90 %)

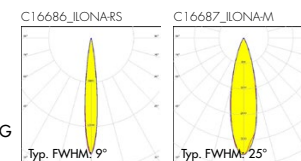
Excellent colour-mixing for high quality retail lighting

Simple and quick mounting into LEDiL HEKLA

Compatibility – LEDiL HEKLA, optimized for 4 to 9 mm and compatible up to 14.5 mm LES size COBs



- RETAIL LIGHTING
- HOSPITALITY LIGHTING
- ARCHITECTURAL FLOOD LIGHTING
- TRACK LIGHTING



# CARMEN-90

## DIAMOND LIKE OPTIC WITH NARROW BEAM

Tight cutoff and excellent colour uniformity with medium size COBs

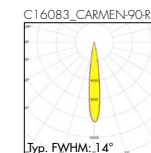
Minimized spill-light and glare with high cd/lm peak values

CARMEN-optics are also available in Ø50 and Ø70 mm

Compatibility – LEDiL HEKLA and COBs with LES sizes up to 14.5 mm



- TRACK AND SPOT LIGHTING
- ARCHITECTURAL LIGHTING
- RETAIL LIGHTING





## LILIAN

### NARROW LINEAR OPTICS FOR ARCHITECTURAL LIGHTING

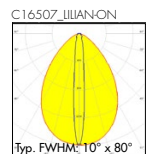
Pitch-free optical design for easy scalability of lumen output

Homogenous light-emitting surface with minimal dot visibility

Accurate 10° x 80° beam with long reach for wall-grazing applications

Compatibility – Optimized for top emitting CSP LEDs and compatible with up to 3535 high-power LEDs

- ARCHITECTURAL LIGHTING
- WALL-GRAZING
- COVE LIGHTING



## LEIA

### ULTRA-NARROW BEAM FOR DECORATIVE LIGHTING

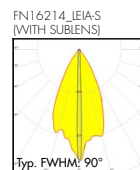
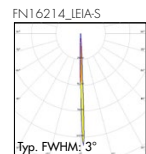
Beautiful, narrow 4° beam with minimal light spill

White holder with colour mixing chamber makes the beam extremely monochrome

Optional sublens to create very narrow oval beam

Compatibility – Optimized for single chip 3535 LED packages, compatible with up to 7070 size LED packages

- ARCHITECTURAL LIGHTING
- DECORATIVE LIGHTING
- WALL-GRAZING



## LINNEA-GC

### UGR OPTIMIZED LINNEA FOR RETAIL LIGHTING

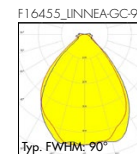
Precise light control in all directions with fixed pitch for 30 LEDs per feet

Wide light-emitting surface to achieve 22 UGR at 1000 lm/ft

Quick to assemble with integrated clips

Compatibility – Optimized for up to 24 mm wide mid-power PCBs

- RETAIL LIGHTING
- INDUSTRIAL LIGHTING



## CLAUDIA

### AFFORDABLE LINEAR LENSES FOR SUPERMARKET LIGHTING

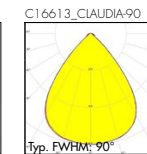
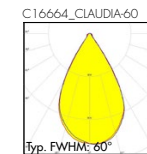
Glare controlled linear lenses and good colour-over-angle performance

Good vertical illumination perfect for supermarket lighting

Can also be used with LED clusters

Compatibility – Optimized for 2835 and compatible with up to 5630 size mid-power LED packages

- RETAIL LIGHTING
- SUPERMARKET LIGHTING
- TUNABLE WHITE LIGHTING







H: 18.1 mm, D: 300 mm

# VICTORIA

## THE POWERHOUSE FOR INDUSTRIAL LIGHTING

160 lenses with patented RZ surface to eliminate colour-over-angle-artefacts from the beam

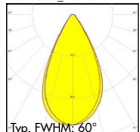
Use with two mid power LEDs or one 5050 size LED per lens and get up to 40 000 lumen output

Can be used with a silicone seal for up to IP67

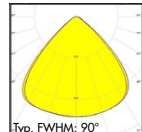
Compatibility – Optimized for 2835 and compatible with up to 5050 size high-power LED packages

- INDUSTRIAL LIGHTING
- RETAIL LIGHTING
- STREET/CATENARY LIGHTING

C16670\_VICTORIA-W  
CS16838\_VICTORIA-IPW



C16669\_VICTORIA-WWW  
CS16839\_VICTORIA-IPWWW



H: 51 mm, D: 4 x 14 mm

# IRIE

## ENHANCED VISION FOR SHORT DISTANCE IR LIGHTING

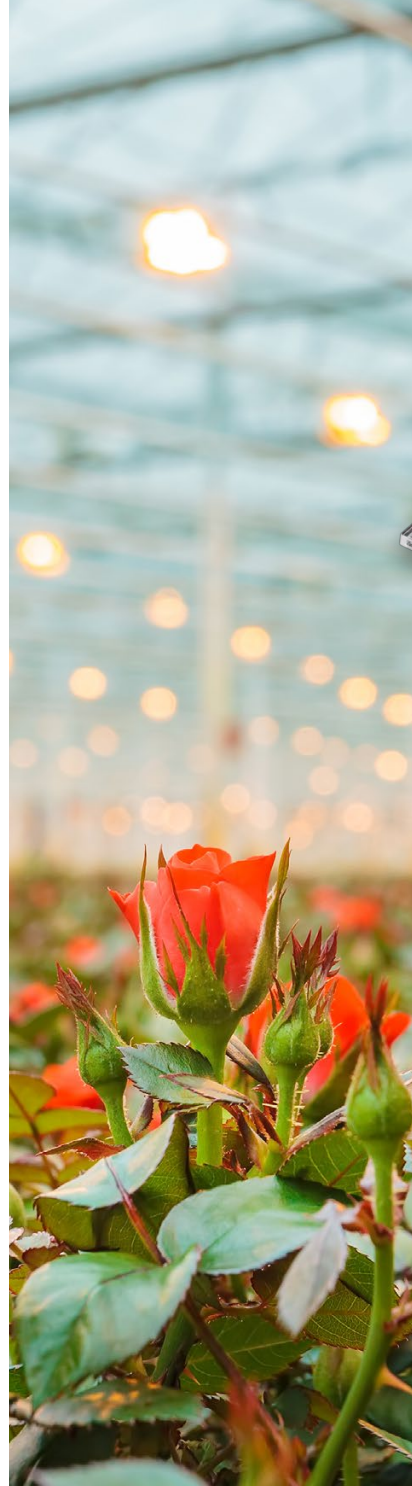
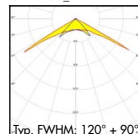
Optimized for most common 4:3 ratio cameras and designed to cover 90° x 120° camera viewing angle

Supports up to 2 IR LEDs under one optic for maximum illumination

Compatibility – Flat 2.75 x 2.0 mm high-power IR LEDs

- INFRARED CAMERAS
- AUTOMOTIVE SENSORS
- SMART MACHINE VISION

CA16755\_IRIE-A



# DAHLIA

## EFFICIENT PLATFORM FOR HORTICULTURAL LIGHTING

Extremely uniform lighting - PPFD uniformity >90 % over the growth area

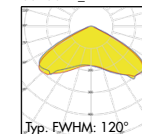
120 lens array easily divisible to 1-4 channels

up to IP67 with easy to clean smooth surface

Compatibility – Typical 3535 size High-Power horticultural LEDs

- HORTICULTURAL TOP LIGHTING

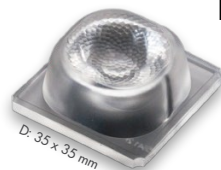
CS16619\_DAHILIA-TL110





# JENNY

## SILICONE LENSES FOR WIDE RANGE OF APPLICATIONS



Made for extreme conditions  
– Superior heat and UV-radiation resistance

Ideal for sport field lighting with ultra high-power LEDs

Compatibility – Up to 7070 size LED packages



- IN- AND OUTDOOR AREA LIGHTING
- CANOPY LIGHTING
- SPORT FIELD LIGHTING
- HIGH MAST LIGHTING

## STRADA-IP-8MX

### 8 LENS ARRAY WITH SILICONE GASKET FOR UP TO IP67



Available in PMMA and PC

Compatible with 2X2MX® ecosystem

Compatibility – Optimized for flat high-power 5050 size LED packages

- STREET LIGHTING

## STRADA-2X2-5050

### OPTIMIZED VERSIONS FOR FLAT 5050 SIZE LED PACKAGES



Same footprint as other LEDiL's STRADA-2X2 lenses

- STREET LIGHTING



# SITARA

## NEW COST-EFFECTIVE STREET LIGHTING FAMILY MADE OF PC

Compatibility – Optimized for 5050 size flat SMD LED packages

Single lenses with positioning pins intended to be glued

2X2-modules with an integrated silicone gasket for up to IP67



- STREET LIGHTING

## STRADELLA-IP-16/-28

### HIGH-DENSITY IP RATED MODULES FOR STREET AND AREA LIGHTING

Integrated silicone gasket (up to IP67) and pocket for connectors and wires

Available in PMMA and PC

Allows high lumen density designs and cost/efficacy optimization

Compatibility – Up to 3535 size high- and mid-power LEDs, High-Bay beams also work with CSP LEDs



- STREET LIGHTING
- INDUSTRIAL LIGHTING



## STRADA-2X2CSP

### STRADA-2X2 LENSES OPTIMIZED FOR HIGH-POWER CSP LEDs

Precise street lighting distribution with excellent cutoff properties

Compatibility – Both five-side and top emitting CSP LEDs



- STREET LIGHTING



**LEDiL®**

**STRADA • ARCHITECTURAL • DAISY • LINEAR • OFFICE • CSP • DAHLIA • LEIA**  
**INDOOR • OFFICE • ARCHITECTURAL • DAISY • IRA • CLAUDIA • VICTORIA •**  
**ARCHITECTURAL • CSP • LINNEA-GC • OFFICE • INDOOR • LILIAN • DAHLIA •**  
**LEDiL Oy • 5050 • ARCHITECTURAL • STRADA • CLAUDIA • CSP • LINEAR •**  
**JOENSUUNKATU 13 • DAISY • LINEAR • OFFICE • CSP • VICTORIA • LEIA •**  
**FI-24100 SALO • FINLAND • DAISY • CSP • VICTORIA • LINEAR • OFFICE •**  
**CLAUDIA • CSP • LINNEA-GC • OFFICE • INDOOR • LILIAN • DAHLIA • CSP •**  
**LEDiL, Inc. • 5050 • ARCHITECTURAL • STRADA • INDOOR • CSP • LINEAR •**  
**228 WEST PAGE STREET SUITE D • LINEAR • OFFICE • CLAUDIA • VICTORIA •**  
**SYCAMORE IL 60178 • USA • DAISY • CSP • DAHLIA • LINEAR • OFFICE • STR**