

FLORENCE-Z30 – Reaching into new heights

FLORENCE-Z30 is new addition to LEDiL's FLORENCE family of optic modules. FLORENCE-Z30 features 30° beam with good uniform light pattern and is designed to mid-bay lighting applications.

FLORENCE-Z30 is designed to replace fluorescent lights and it's great choice for office lights especially in higher installations with the optional FLORENCE-shade.

FEATURES

- Good uniform light pattern
- Designed to replace fluorescent lights
- Typical installation height 5-8 meters
- Medium narrow light distribution
- Compatible with Zhaga Book 7 three row mid-power linear modules like Philips Fortimo LEDline 3R

TYPICAL APPLICATIONS

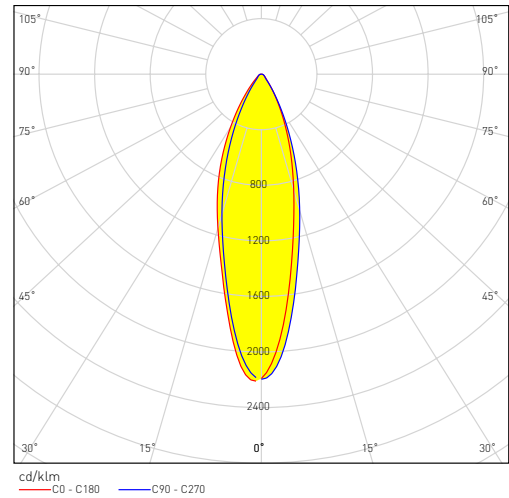
- Indoor architectural lighting
- Office lighting
- Industrial lighting
- Mid-bay luminaires



F14486_FLORENCE-Z30

TECHNICAL SPECIFICATIONS

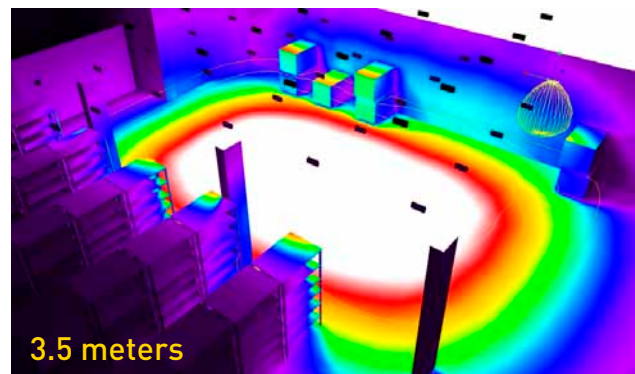
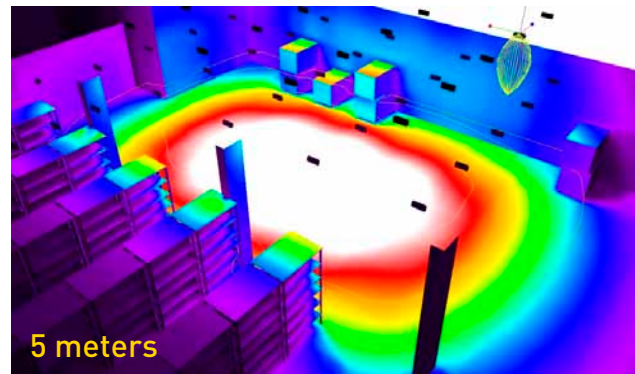
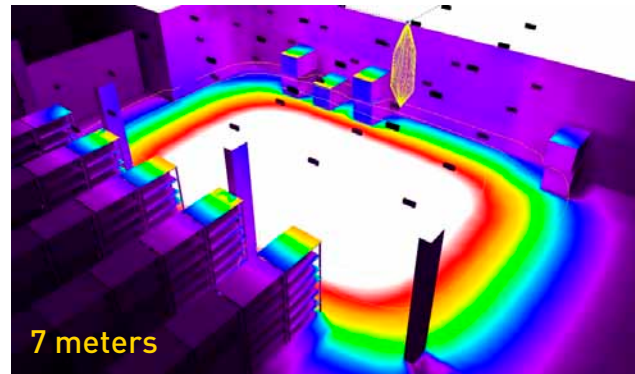
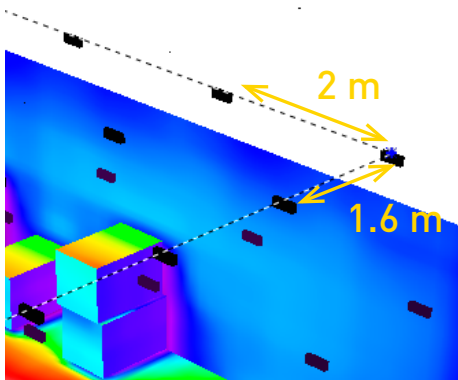
- Dimensions 286 x 61 mm
- Height 8.5 mm
- Typical efficiency 94%
- Precision-molded from optical grade PMMA - UL94 HB rated material with operating rating -40°C to +80°C



DESIGN EXAMPLE

Industrial lighting with FLORENCE

- Range of beam distributions for different technical lighting needs and different installation heights
- Optimized for the best efficacy in the market
- Optional UGR optimization with shade part
- typical application installation heights:
FLORENCE-Z30: 7 m
FLORENCE-Z60: 5 m
FLORENCE-Z90: 3.5 m
- Distance between luminaires: 1.6 x 2 m
→ Same illuminance levels on the floor level



ORDERING INFORMATION

F14486_FLORENCE-Z30

Visit www.ledil.com for ordering codes and latest product specifications, which may vary by LED