



## FLORENCE – Cost effective lighting with mid-power LEDs

FLORENCE is LEDiL's new family of optic modules for Philips Fortimo Led Line 3R compliant 3 row mid-power modules.

The FLORENCE family offers 3 optical versions. FLORENCE symmetrical beam Z60(60deg) and Z90(90deg) applications provide a uniform and low glare light distribution in advanced low bay environments with 90% efficiency.

FLORENCE asymmetrical beam ZT25 application is designed especially for retail environments where items are illuminated on shelves on both sides of the aisle. ZT25 provides a uniform double sided asymmetric beam with a twenty degree tilt optimized to illuminate products on the shelves.

### FEATURES

- 33 mid-power LED sources
- Dimensions: 286 x 61 x 10 mm
- Symmetrical beam for generic low-bay and double asymmetric beam for shelf lighting in retail
- Optimized to reduce glare

### TYPICAL APPLICATIONS

- Low bay lighting
- Store lighting
- Office lighting
- High bay lighting



F13853\_FLORENCE-Z90

## TECHNICAL SPECIFICATIONS

### F14112\_FLORENCE-Z60

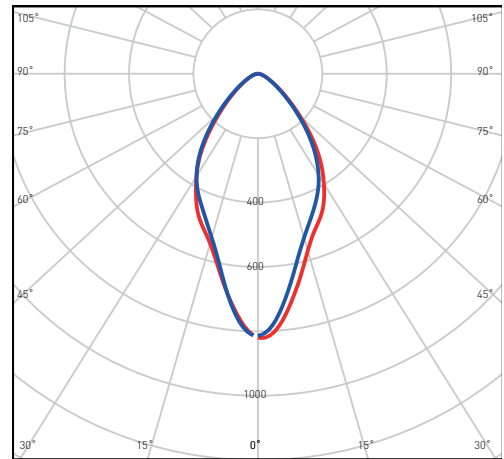
- Diameter 286 x 61 mm
- Height 8.5 mm

### F13853\_FLORENCE-Z90

- Diameter 286 x 61 mm
- Height 8.45 mm
- PMMA

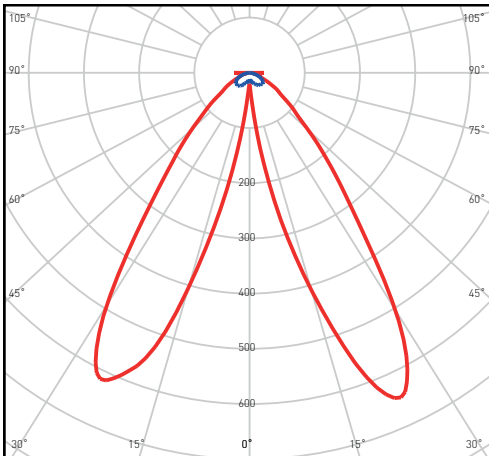
### F14170\_FLORENCE-ZT25

- Diameter 286 x 61 mm
- Height 11 mm
- PMMA



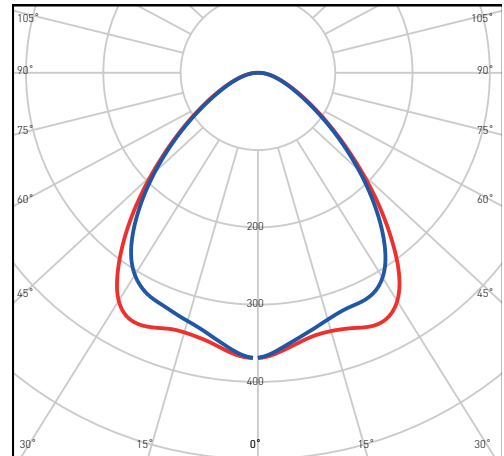
cd/klm  
C0 - C180 C90 - C270

**F14112\_FLORENCE-Z60**



cd/klm  
C0 - C180 C90 - C270

**F14170\_FLORENCE-ZT25**



cd/klm  
C0 - C180 C90 - C270

**F13853\_FLORENCE-Z90**

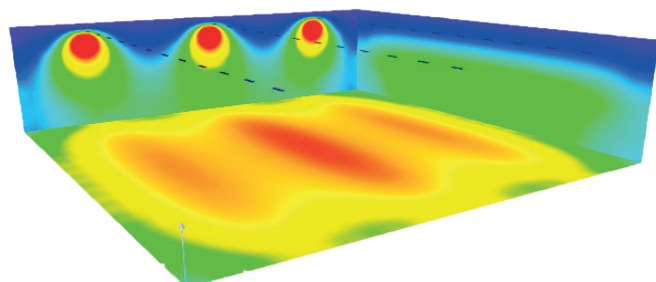
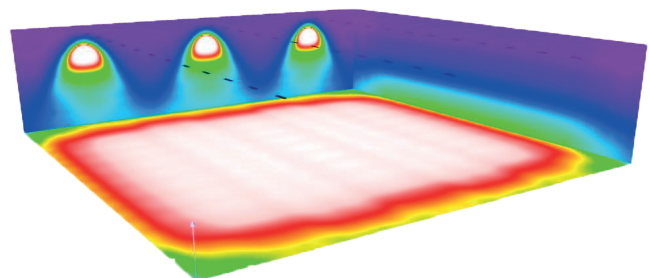
## DESIGN EXAMPLE

### FLORENCE-Z in a low-bay application

- More light directed to the application area
- Better area uniformity
- Better horizontal illuminance

### Diffusing film only application

- Light is wasted on walls and ceilings
- Lower overall illuminance



## ORDERING INFORMATION

F14112\_FLORENCE-Z60

F13853\_FLORENCE-Z90

F14170\_FLORENCE-ZT25

Visit [www.ledil.com](http://www.ledil.com) for ordering codes and latest product specifications, which may vary by LED