



LEILA-WAS – Let your walls shine

LEDiL's well-established LEILA family expands with the new asymmetric LEILA-O-WAS optics. The LEILA-O-WAS is similar with LEDiL's LAURA-O-WAS and EMILY-O-WAS optics.

The LEILA-O-WAS optics are designed to be used in groups to provide even and uniform illumination to the walls. Typical installation distance from the wall is approximately 10...20 cm and optimal luminaire spacing 5...15 cm.

The LEILA-O-WAS optics are designed for the range of LEDs from Cree, Osram, Seoul, Nichia and Samsung.

FEATURES and BENEFITS

- Similar with LAURA-O-WAS and EMILY-O-WAS optics
- Designed to be used in groups with approx. 10 cm distance from the wall and with 5-10 cm spacing between luminaires
- Designed for the range of LEDs from Cree, Osram, Seoul, Nichia and Samsung

MARKETS and TYPICAL APPLICATIONS

- Wall washing applications
- Interior architectural and retail lighting
- Outdoor facade lighting

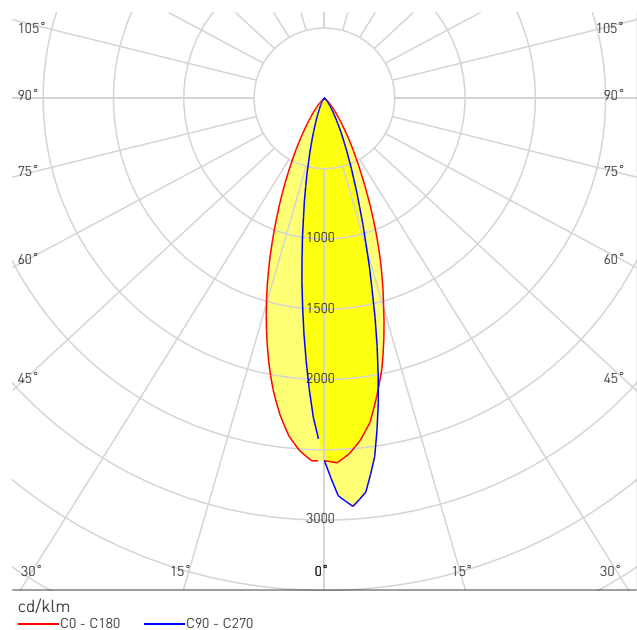


CA14392_LXP2-O-WAS

TECHNICAL SPECIFICATIONS

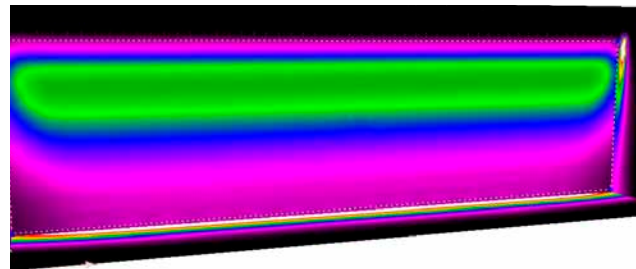
LEILA-O-WAS

- Diameter 21.6 mm
- Height 14.6
- Typical efficiency 84%
- Mounts with tape
- Precision-molded from optical grade PMMA – UL94 HB rated material with operating rating -40°C to +80°C



Design example

- Room height: 3.5 m
- Assembly height: 3.1 m
- Distance from the wall: 20 cm
- Output of each luminaire: 86 lm
- E_{av} : 56 lx, E_{max} : 102 lx, u_0 : 0.280



Don't forget these

EMILY-WAS

www.ledil.com/emily

EMILY-O-WAS

- Diameter 26 mm
- Height 14.8 mm
- Typical efficiency 87%
- Precision-molded from optical grade PMMA – UL94 HB rated material with operating rating -40°C to +80°C



EMILY-SS-WAS

- Diameter 26 mm
- Height 14.95 mm
- Typical efficiency 90%
- Precision-molded from optical grade PMMA – UL94 HB rated material with operating rating -40°C to +80°C



LAURA-WAS

www.ledil.com/laura

LAURA-O-WAS

- Dimensions 21.6 x 21.6 mm
- Height 13.1 mm
- Typical efficiency 85%
- Precision-molded from optical grade PMMA – UL94 HB rated material with operating rating -40°C to +80°C



LAURA-SS-WAS

- Dimensions 21.6 x 21.6 mm
- Height 13.1 mm
- Typical efficiency 92%
- Precision-molded from optical grade PMMA – UL94 HB rated material with operating rating -40°C to +80°C



ORDERING INFORMATION

Consult www.ledil.com for ordering codes and latest product specifications, which may vary by LED